

Category: **Root**

Question

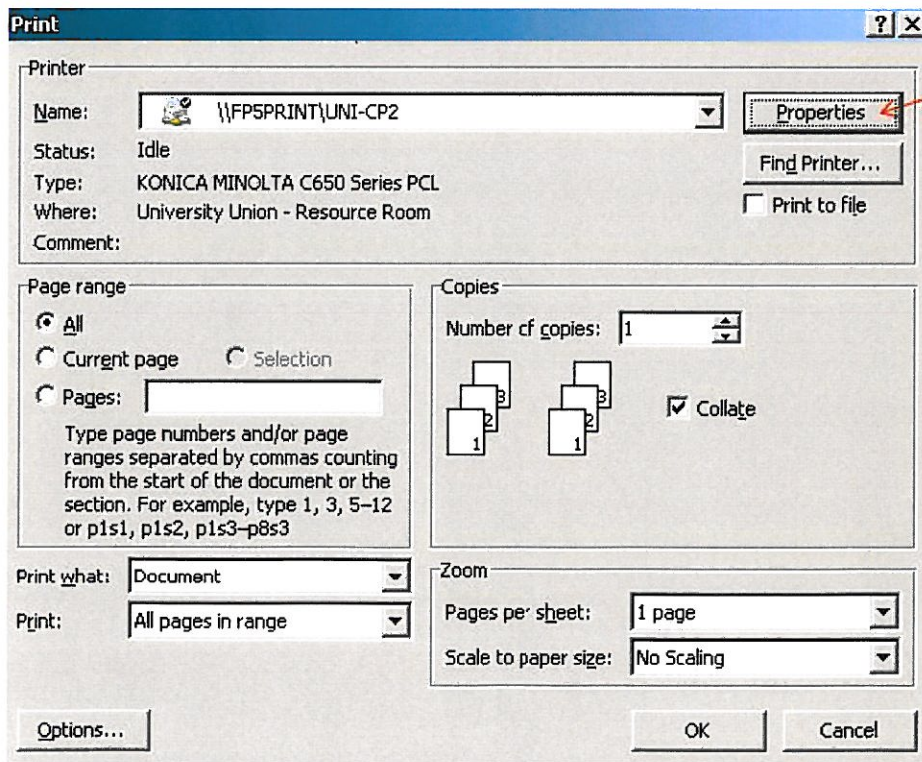
How to print to and from a user box

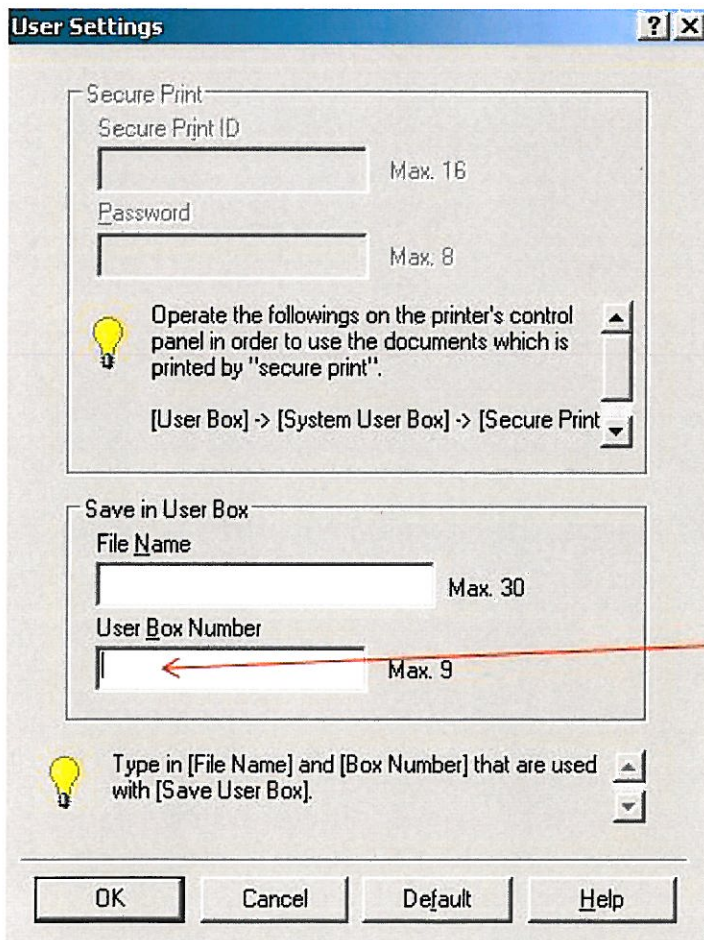
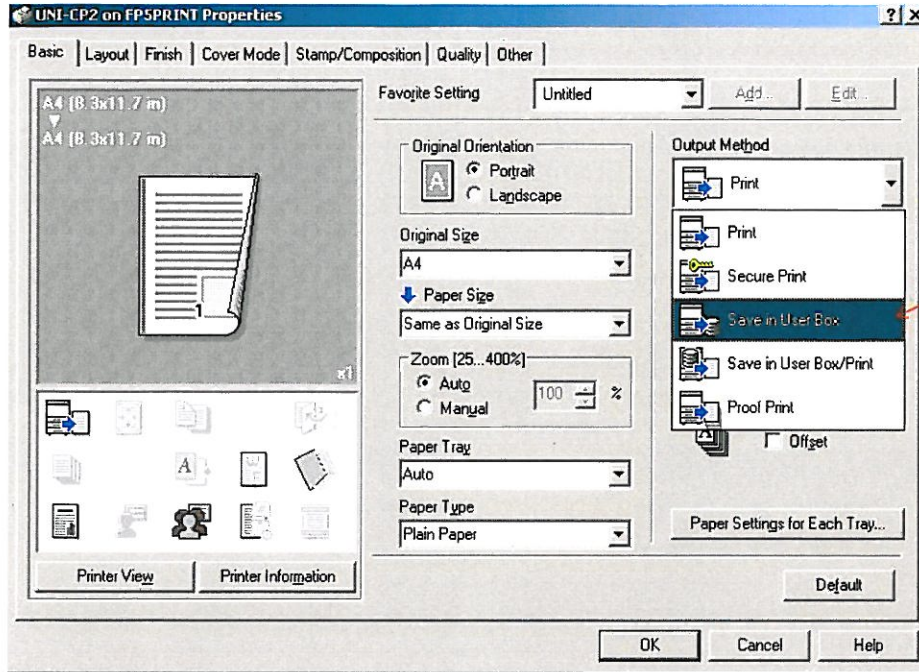
user box : ~~XXXXXXXXXX~~
password : ~~XXXXXXXXXX~~

Answer

To print to a user box;

Click print, then follow the below images;



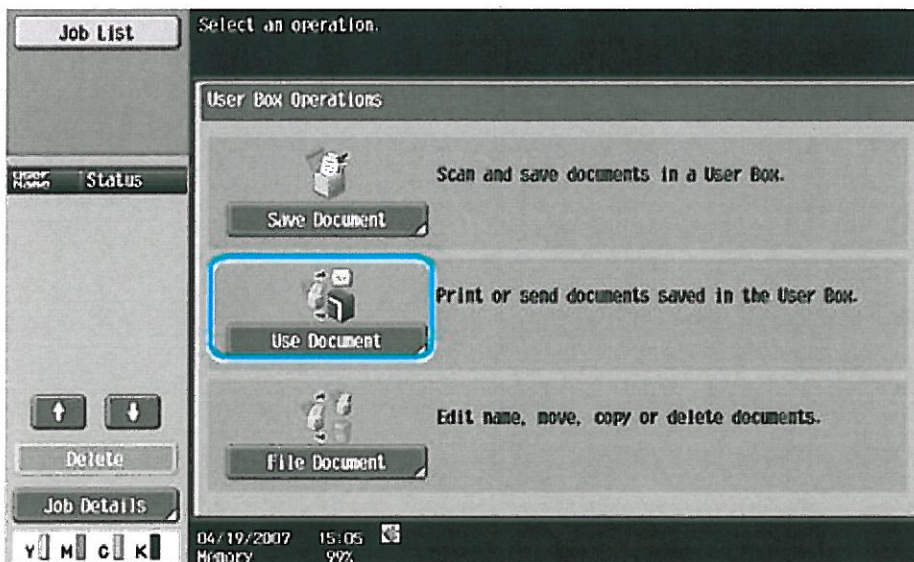
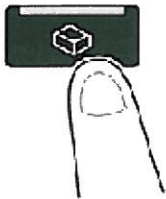


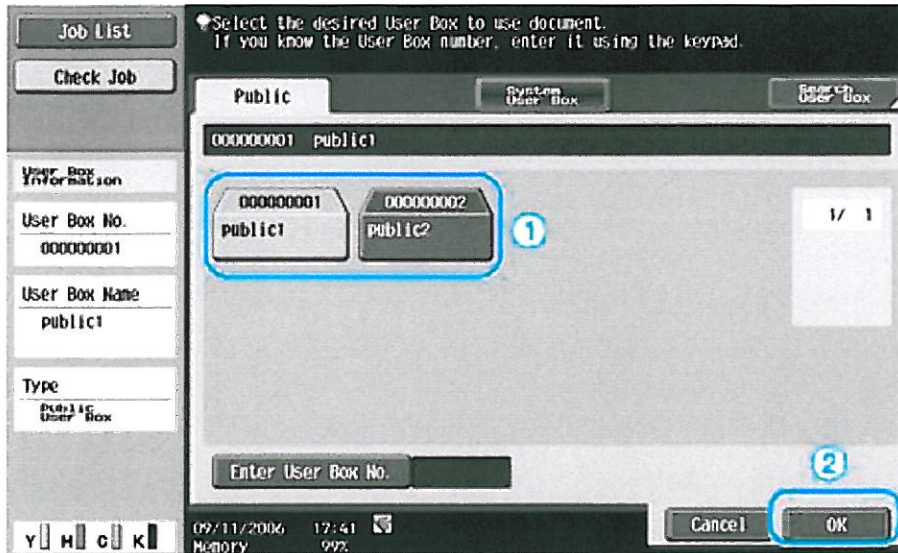
Enter your userbox ID number in the box, do not worry about filename.(leave blank)

Now when files are sent to the printer they are saved in a user box. To revert back to just printing change the output method.

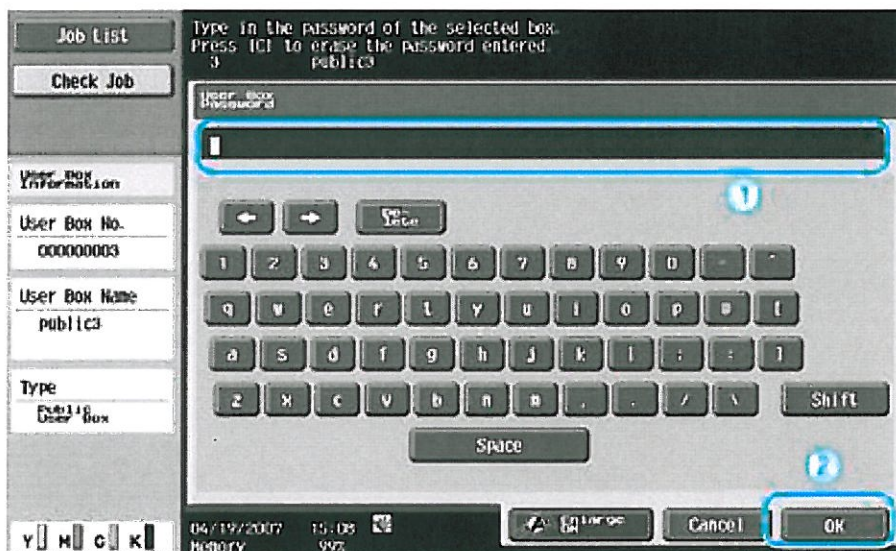
Once a file has been sent to a user box, to print it out, follow the next steps;

User Box

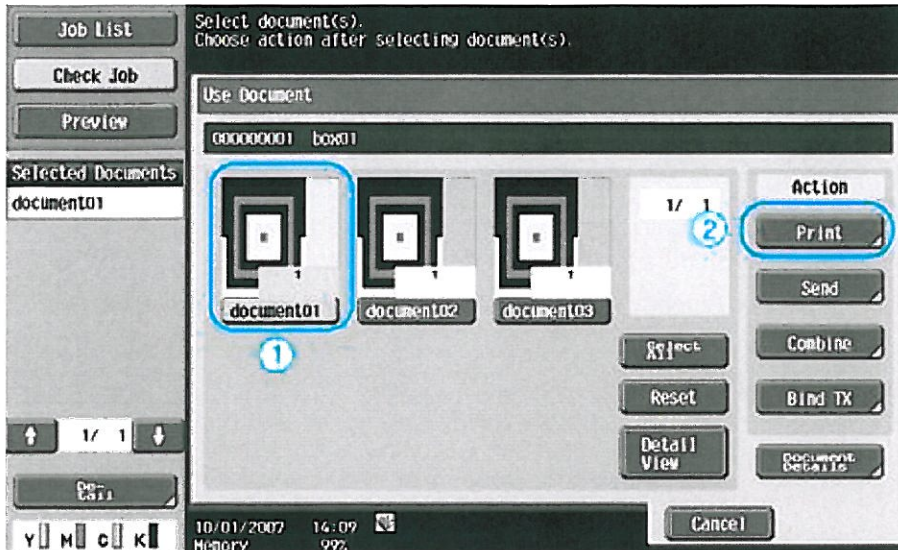




Select your user box.



Enter Password.



Select document and Action.

This should allow the selected document in the user box to be printed.

Author : uniitsup | On : 08-12-2009 13:01 | Last update : 08-12-2009 13:09 | Views : 7

Associated documents:

Name	Entity	File	Web Link	Heading	MIME Type
------	--------	------	----------	---------	-----------